

FLOOR PLANS

Rustomjee[®]
YAZARINA III
DADAR PARSI COLONY

PRIVACY, LIKE CHARITY,
BEGINS IN YOUR HOME.



Yazarina III offers what few other addresses in the city can - a location that is an island of greenery in the concrete sprawl of Mumbai. And while the old, four storey buildings of nearby Dadar Parsi Colony and gardens in the area remain perfectly preserved, you come home to the latest lifestyle features.

Enjoy your optimally planned 3 bedroom home.

TYPICAL FLOOR PLAN - REFUGE FLOOR (7TH FLOOR)



DISCLAIMER

1. ROOM DIMENSIONS AND USABLE AREA INDICATED ARE MEASURED CONSIDERING UNFINISHED WALL SURFACES. 2. MINOR VARIATIONS (+/-3%) IN ACTUAL CARPET AREA MAY OCCUR AS A RESULT OF FINISHING TOLERANCES AND COLUMN PROJECTIONS. 3. THE FURNITURES FIXTURES AND EQUIPMENT (FF & E) INDICATED ABOVE DEPICTS PROPOSED INTERIOR ARRANGEMENT AS ENVISAGED BY THE ARCHITECT AND IS NOT THE PART OF PRODUCT OFFERING.

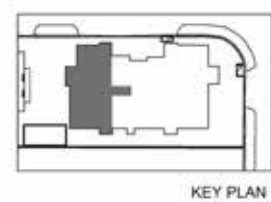
 MahaRERA registration no.: P51900024307. Listed on the website <https://maharera.mahaonline.gov.in/>

2 BEDROOM RESIDENCES - APARTMENT NO. 1 (7TH FLOOR)



1. PASSAGE	2830 X 1350	9'3" X 4'5"
2. LIVING ROOM	5800 X 3200	19'0" X 10'6"
3. DINING	2600 X 2510	8'6" X 8'3"
4. KITCHEN	2750 X 2360	9'0" X 7'9"
5. D.B.	760 X 2160	2'6" X 7'1"
6. BED ROOM 01	3950 X 3200	13'0" X 10'6"
7. PASSAGE	1850 X 950	6'0" X 3'2"
8. TOILET 01	1700 X 2100	5'7" X 6'11"
9. BED ROOM 02	3790 X 2215	12'5" X 7'3"
10. PASSAGE	2735 X 1050	9'0" X 3'5"
11. TOILET 02	1370 X 2290	4'6" X 7'6"
12. PASSAGE	900 X 1050	3'0" X 3'5"

RERA AREA = 72.82 SQ. MT.
783.82 SQ. FT.
AREA UNDER EXCLUSIVE BALCONY = 1.64 SQ. MT.
17.65 SQ. FT.



DISCLAIMER

1. ROOM DIMENSIONS AND USABLE AREA INDICATED ARE MEASURED CONSIDERING UNFINISHED WALL SURFACES. 2. MINOR VARIATIONS (+/-3%) IN ACTUAL CARPET AREA MAY OCCUR AS A RESULT OF FINISHING TOLERANCES AND COLUMN PROJECTIONS. 3. THE FURNITURES FIXTURES AND EQUIPMENT (FF & E) INDICATED ABOVE DEPICTS PROPOSED INTERIOR ARRANGEMENT AS ENVISAGED BY THE ARCHITECT AND IS NOT THE PART OF PRODUCT OFFERING.

 MahaRERA registration no.: P51900024307. Listed on the website <https://maharera.mahaonline.gov.in/>

TYPICAL FLOOR PLAN (8TH TO 13TH FLOOR)



DISCLAIMER
 1. ROOM DIMENSIONS AND USABLE AREA INDICATED ARE MEASURED CONSIDERING UNFINISHED WALL SURFACES. 2. MINOR VARIATIONS (+/-3%) IN ACTUAL CARPET AREA MAY OCCUR AS A RESULT OF FINISHING TOLERANCES AND COLUMN PROJECTIONS. 3. THE FURNITURES FIXTURES AND EQUIPMENT (FF & E) INDICATED ABOVE DEPICTS PROPOSED INTERIOR ARRANGEMENT AS ENVISAGED BY THE ARCHITECT AND IS NOT THE PART OF PRODUCT OFFERING.

MahaRERA registration no.: P51900024307. Listed on the website <https://maharera.mahaonline.gov.in/>

3 BEDROOM RESIDENCES - APARTMENT NO. 1 (8TH TO 13TH FLOOR)



DISCLAIMER
 1. ROOM DIMENSIONS AND USABLE AREA INDICATED ARE MEASURED CONSIDERING UNFINISHED WALL SURFACES. 2. MINOR VARIATIONS (+/-3%) IN ACTUAL CARPET AREA MAY OCCUR AS A RESULT OF FINISHING TOLERANCES AND COLUMN PROJECTIONS. 3. THE FURNITURES FIXTURES AND EQUIPMENT (FF & E) INDICATED ABOVE DEPICTS PROPOSED INTERIOR ARRANGEMENT AS ENVISAGED BY THE ARCHITECT AND IS NOT THE PART OF PRODUCT OFFERING.

MahaRERA registration no.: P51900024307. Listed on the website <https://maharera.mahaonline.gov.in/>

3 BEDROOM RESIDENCES - APARTMENT NO. 2 (8TH TO 13TH FLOOR)



DISCLAIMER
 1. ROOM DIMENSIONS AND USABLE AREA INDICATED ARE MEASURED CONSIDERING UNFINISHED WALL SURFACES. 2. MINOR VARIATIONS (+/-3%) IN ACTUAL CARPET AREA MAY OCCUR AS A RESULT OF FINISHING TOLERANCES AND COLUMN PROJECTIONS. 3. THE FURNITURES FIXTURES AND EQUIPMENT (FF & E) INDICATED ABOVE DEPICTS PROPOSED INTERIOR ARRANGEMENT AS ENVISAGED BY THE ARCHITECT AND IS NOT THE PART OF PRODUCT OFFERING.

MahaRERA registration no.: P51900024307. Listed on the website <https://maharera.mahaonline.gov.in/>

ROOFTOP AMENITIES

14TH FLOOR



DISCLAIMER

1. ROOM DIMENSIONS AND USABLE AREA INDICATED ARE MEASURED CONSIDERING UNFINISHED WALL SURFACES. 2. MINOR VARIATIONS (+/-3%) IN ACTUAL CARPET AREA MAY OCCUR AS A RESULT OF FINISHING TOLERANCES AND COLUMN PROJECTIONS. 3. THE FURNITURES FIXTURES AND EQUIPMENT (FF & E) INDICATED ABOVE DEPICTS PROPOSED INTERIOR ARRANGEMENT AS ENVISAGED BY THE ARCHITECT AND IS NOT THE PART OF PRODUCT OFFERING.

 MahaRERA registration no.: P51900024307. Listed on the website <https://maharera.mahaonline.gov.in/>

ROOFTOP AMENITIES

TERRACE FLOOR



DISCLAIMER

1. ROOM DIMENSIONS AND USABLE AREA INDICATED ARE MEASURED CONSIDERING UNFINISHED WALL SURFACES. 2. MINOR VARIATIONS (+/-3%) IN ACTUAL CARPET AREA MAY OCCUR AS A RESULT OF FINISHING TOLERANCES AND COLUMN PROJECTIONS. 3. THE FURNITURES FIXTURES AND EQUIPMENT (FF & E) INDICATED ABOVE DEPICTS PROPOSED INTERIOR ARRANGEMENT AS ENVISAGED BY THE ARCHITECT AND IS NOT THE PART OF PRODUCT OFFERING.

 MahaRERA registration no.: P51900024307. Listed on the website <https://maharera.mahaonline.gov.in/>

IT'S THOUGHTFUL. IT'S **Rustomjee**

WWW.RUSTOMJEE.COM

Site Address: Rustomjee Yazarina III, Plot 742, Road Number 5, Dadar Parsi Colony,
Dadar East, Mumbai 400 014.



MahaRERA registration no.: P51900024307. Listed on the website <https://maharera.mahaonline.gov.in/>

Disclaimer: The plans, specifications, images and other details depicted herein are only indicative and the Promoter reserves the right to change any or all of these in the interest of the development as per applicable rules and regulations. It does not constitute an offer and/or contract of any type between the Promoter and the recipient. Any prospective sale shall be governed by the terms and conditions of the agreement for sale to be entered into between the parties and recipient shall refer the MahaRERA Project site for complete details. The property is mortgaged with PNB Housing Finance Limited. The No Objection certificate (NOC)/ permission of the mortgage Bank/Security trustee would be provided for sale of flats/units/property, if required.